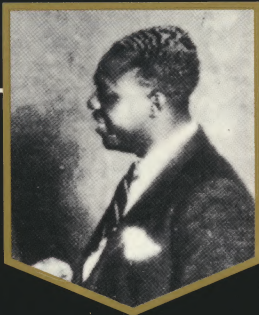


THE CHRONOLOGICAL



BENNIE MOTEN'S
KANSAS CITY ORCHESTRA
1929 - 1930

WITH COUNT BASIE, JIMMY RUSHING, "HOT LIPS" PAGE,
EDDIE DURHAM, HARLAN LEONARD, BUSTER MOTEN,
THAMON HAYES, ED LEWIS...

CLASSICS

5 7 8

5 7 8

BENNIE MOTEN'S KANSAS CITY ORCHESTRA 1929 - 1930

DK 003
COMPACT
disc
DIGITAL AUDIO
A.A.D.



- | | | | | | | | |
|----------------------------------|-----------|----------|------|----------------------------|-----------|----------|------|
| 1 That Certain Motion | (55426-1) | 07-17-29 | 3:00 | 13 Mary Lee | (57313-3) | 10-24-29 | 3:15 |
| 2 It Won't Be Long | (55427-3) | 07-17-29 | 2:47 | 14 Rit-Dit-Ray | (57314-2) | 10-24-29 | 2:46 |
| 3 When Life Seems So Blue | (42932-4) | 07-18-29 | 2:50 | 15 New Vine Street Blues | (57315-2) | 10-24-29 | 2:58 |
| 4 Loose Like A Goose | (55428-1) | 07-18-29 | 2:54 | 16 Sweetheart Of Yesterday | (57316-2) | 10-24-29 | 2:37 |
| 5 Just Say It's Me | (55429-1) | 07-18-29 | 2:52 | 17 Won't You Be My Baby? | (62909-2) | 10-27-30 | 3:11 |
| 6 New Goofy Dust Rag | (55430-1) | 07-18-29 | 2:38 | 18 I Wish I Could Be Blue | (62910-2) | 10-28-30 | 3:08 |
| 7 Rumba Negro (Spanish Stomp) | (57301-1) | 10-23-29 | 2:47 | 19 Oh! Eddle | (62911-2) | 10-28-30 | 2:54 |
| 8 The Jones Law Blues | (57302-2) | 10-23-29 | 3:05 | 20 That Too, Do | (62912-2) | 10-28-30 | 3:18 |
| 9 Band Box Shuffle | (57303-2) | 10-23-29 | 2:27 | 21 Mack's Rhythm | (62913-1) | 10-28-30 | 3:00 |
| 10 Small Black | (57304-3) | 10-23-29 | 3:18 | 22 You Made Be Happy | (62914-1) | 10-28-30 | 3:20 |
| 11 Every Day Blues (Yo Yo Blues) | (57305-2) | 10-23-29 | 3:05 | 23 Here Comes Marjorie | (62915-1) | 10-28-30 | 2:53 |
| 12 Boot It | (57312-3) | 10-24-29 | 3:13 | | | | |

2 BOB CLEMMONS VOCAL. 14 WILLIE McWASHINGTON VOCAL. 17, 20 JIMMY RUSHING VOCAL.

ALSO AVAILABLE BY BENNIE MOTEN : CLASSICS 549 (1923-27) & 558 (1927-29).

MADE IN THE E.E.C. © 1991 CLASSICS RECORDS

1929-1930

BENNIE MOTEN

CLASSICS 578

BENNIE MOTEN

1929-1930

CLASSICS 578

5 7 8

5 7 8

BENNIE MOTEN'S KANSAS CITY ORCHESTRA

1929 - 1930

- | | | | |
|-----------|--|----------|------|
| 1 | THAT CERTAIN MOTION (Moten-Hayes-Beny)
(55426-1) | 07-17-29 | 3:00 |
| 2 | IT WON'T BE LONG (Moten-Abraham)
(55427-3) | 07-17-29 | 2:47 |
| 3 | WHEN LIFE SEEMS SO BLUE (Moten-Hayes)
(42932-4) | 07-18-29 | 2:50 |
| 4 | LOOSE LIKE A GOOSE (Moten-Moten)
(55428-1) | 07-17-29 | 2:54 |
| 5 | JUST SAY IT'S ME (Moten-Moten)
(55429-1) | 07-17-29 | 2:52 |
| 6 | NEW GOOFY DUST RAG (Moten)
(55430-1) | 07-17-29 | 2:38 |
| 7 | RUMBA NEGRO (SPANISH STOMP) (Moten-Basie)
(57301-1) | 10-23-29 | 2:47 |
| 8 | THE JONES LAW BLUES (Moten-Basie)
(57302-2) | 10-23-29 | 3:05 |
| 9 | BAND BOX SHUFFLE (Moten-Basie)
(57303-2) | 10-23-29 | 2:27 |
| 10 | SMALL BLACK (Moten-Basie)
(57304-3) | 10-23-29 | 3:18 |
| 11 | EVERY DAY BLUES (YO YO BLUES) (Moten-Durham)
(57305-2) | 10-23-29 | 3:05 |
| 12 | BOOT IT (Moten)
(57312-3) | 10-24-29 | 3:13 |
| 13 | MARY LEE (Moten-Perry)
(57313-3) | 10-24-29 | 3:15 |

- | | | | |
|-----------|--|----------|------|
| 14 | RIT-DIT-RAY (Moten-Basie)
(57314-2) | 10-24-29 | 2:46 |
| 15 | NEW VINE STREET BLUES (Moten-Basie)
(57315-2) | 10-24-29 | 2:58 |
| 16 | SWEETHEART OF YESTERDAY (Moten-Hold-Sanders)
(57316-2) | 10-24-29 | 2:37 |
| 17 | WON'T YOU BE MY BABY ? (Moten-Rushing)
(62909-2) | 10-27-30 | 3:11 |
| 18 | I WISH I COULD BE BLUE (Moten-Durham-Basie)
(62910-2) | 10-28-30 | 3:08 |
| 19 | OH ! EDDIE (Moten-Durham)
(62911-2) | 10-28-30 | 2:54 |
| 20 | THAT TOO, DO (Moten-Durham-Basie)
(62912-2) | 10-28-30 | 3:18 |
| 21 | MACK'S RHYTHM (Moten-Basie)
(62913-1) | 10-28-30 | 3:00 |
| 22 | YOU MADE ME HAPPY (Moten-Durham)
(62914-1) | 10-28-30 | 3:20 |
| 23 | HERE COMES MARJORIE (Moten-Woode)
(62915-1) | 10-28-30 | 2:53 |

Photo from the Max Jones collection.

THE CLASSICS CHRONOLOGICAL SERIES

- 500: ELLA FITZGERALD 1935-1937
501: JIMMIE LUNCEFORD 1930-1934
502: CHICK WEBB 1929-1934
503: COUNT BASIE 1936-1938
504: COUNT BASIE 1938-1939
505: JIMMIE LUNCEFORD 1934-1935
506: ELLA FITZGERALD 1937-1938
507: ART TATUM 1932-1934
508: TEDDY WILSON 1934-1935
509: LOUIS ARMSTRONG 1934-1936
510: JIMMIE LUNCEFORD 1935-1937
511: TEDDY WILSON 1935-1936
512: LOUIS ARMSTRONG 1936-1937
513: COUNT BASIE 1939
514: EARL HINES 1932-1934
515: LOUIS ARMSTRONG 1937-1938
516: CAB CALLOWAY 1930-1931
517: CHICK WEBB 1935-1938
518: ELLA FITZGERALD 1938-1939
519: FLETCHER HENDERSON 1937-1938
520: JIMMIE LUNCEFORD 1937-1939
521: TEDDY WILSON 1936-1937
522: BENNY CARTER 1929-1933
523: LOUIS ARMSTRONG 1938-1939
524: LIONEL HAMPTON 1937-1938
525: ELLA FITZGERALD 1939
526: CAB CALLOWAY 1931-1932
527: FLETCHER HENDERSON 1934-1937
528: EARL HINES 1934-1937
529: LOUIS ARMSTRONG 1932-1933
530: BENNY CARTER 1933-1936
531: TEDDY WILSON 1937
532: JIMMIE LUNCEFORD 1939
533: COUNT BASIE 1939 (VOLUME II)
534: LIONEL HAMPTON 1938-1939
535: FLETCHER HENDERSON 1932-1934
536: LOUIS ARMSTRONG 1931-1932
537: CAB CALLOWAY 1932
538: EARL HINES 1937-1939
539: DUKE ELLINGTON 1924-1927
540: HENRY "RED" ALLEN 1929-1933
541: BENNY CARTER 1936
542: DUKE ELLINGTON 1927- 1928
543: DON REDMAN 1931-1933
544: CAB CALLOWAY 1932-1934
545: EARL HINES 1928-1932
546: FLETCHER HENDERSON 1931-1932
547: LOUIS ARMSTRONG 1930-1931
548: TEDDY WILSON 1937-1938
549: BENNIE MOTEN 1923-1927
550: DUKE ELLINGTON 1928
551: HENRY "RED" ALLEN 1933-1935
552: BENNY CARTER 1937-1939
553: DON REDMAN 1933-1936
554: CAB CALLOWAY 1934-1937
555: FLETCHER HENDERSON 1931
556: TEDDY WILSON 1938
557: LOUIS ARMSTRONG 1929-1930
558: BENNIE MOTEN 1927-1929
559: DUKE ELLINGTON 1928-1929
560: ART TATUM 1934-1940
561: HOT LIPS PAGE 1938-1940
562: LIONEL HAMPTON 1939-1940
563: COUNT BASIE 1939-1940
564: LIL HARDIN ARMSTRONG 1936-1940
565: JIMMIE LUNCEFORD 1939-1940
566: ELLA FITZGERALD 1939-1940
567: EARL HINES 1939-1940
568: CAB CALLOWAY 1937-1938
569: DUKE ELLINGTON 1929
570: LOUIS ARMSTRONG 1928-1929
571: TEDDY WILSON 1939
572: FLETCHER HENDERSON 1927-1931
573: ANDY KIRK 1936-1937
574: DON REDMAN 1936-1939
575: HENRY "RED" ALLEN 1935-1936
576: CAB CALLOWAY 1938-1939
577: DUKE ELLINGTON 1929-1930
578: BENNIE MOTEN 1929-1930
579: BENNY CARTER 1939-1940
580: FLETCHER HENDERSON 1927
581: ANDY KIRK 1937-1938
582: BILLIE HOLIDAY 1933-1937
583: SIDNEY BECHET 1923-1936
584: JELLY-ROLL MORTON 1923-1924...

BENNIE MOTEN'S KANSAS CITY ORCHESTRA 1929 - 1930

There is no doubt that Eddie Durham's arrangements were well ahead of their time and that he was one of the creators of what is commonly known as the "Kansas City Style". He had already been working in the Midwest for several years prior to joining Bennie Moten's band in the late summer of 1929 - together with Count Basie! Hence the tremendous progress of their orchestra, so well documented by the fine recordings you are about to hear. Bennie Moten was born in Kansas City, Missouri, on November 13, 1894. His mother was a pianist and became Bennie Moten's first teacher of that instrument. Bennie also played baritone horn with a local band for a while. After working with various groups in his native town, he formed his own quintet in the early twenties. Thanks to his early recordings and his success with local audiences, he was gradually able to enlarge his group until it had reached the size of a big band by the end of the decade. As from the late twenties they played residencies at ballrooms in the Midwest, but were also heard at New York's Lafayette for a number of engagements. During this period Bennie Moten was also responsible for several other bands, all operating under his name because of his popularity in this part of the United States. The Depression did not diminish his success and he was able to record prolifically in 1930 and 1932. These recording sessions gave us some of the most impressive and most influential big-band recordings we have and they helped pave the way for many of the coming swing bands. Unfortunately, Bennie Moten did not live to see the nation-wide breakthrough of the style he helped to create: he died from complications after a tonsillectomy on April 2, 1935 in Kansas City. After Bennie's death, some of his best musicians indirectly found their way to Count Basie, who had played with the band since 1929. The latter's success would not have been possible without his former employer, Bennie Moten. Volume 3 of the chronological recordings of Bennie Moten and his Orchestra includes the second half of his numerous sides from July 1929 and ends midway through a monumental five-day session during the closing days of October 1930. The first six sides conclude the band's summer excursion to the recording studios in Chicago. Some three months later Bennie Moten was back with a now noticeably improved band that included Eddie Durham and a new pianist, one William Basie. The ten cuts from October 1929 mark the beginning of what most experts consider the orchestra's best period - culminating in the outstanding tracks from 1932 which will be included in our next volume. Count Basie's first solo with the band can be heard on "The Jones Law Blues", but he has also given solo space on most of the other titles. "Won't You Be My Baby" has Jimmy Rushing singing his first vocal with Moten, and also introduces Southwest trumpet-legend "Hot Lips" Page to the band! To be continued...

Anatol Schenker, February 1991.

DISCOGRAPHY BENNIE MOTEN 1929 - 1930

BENNIE MOTEN'S KANSAS CITY ORCHESTRA: Bennie Moten-p dir. Ed Lewis-Booker Washington-c/Thamon Hayes-tb/Harlan Leonard-cl-ss-as/Jack Washington-cl-as-bar/Woody Walder-cl-ts/Ira "Buster" Moten-pac-2nd p/Leroy Berry-bj/Vernon Page-bb/Willie McWashington-d/Bob Clemmons-v.

Chicago, July 17, 1929.
 55246-1 That Certain Motion Victor V-38104
 55427-3 It Won't Be Long Victor V-38123

BENNIE MOTEN'S KANSAS CITY ORCHESTRA: Instrumentation as shown individually.

Chicago, July 18, 1929.
 42932-4 When Life Seemes So Blue - all but pac Victor V-38132
 55428-2 Loose Like A Goose - dWW/2p/d Victor V-38123
 55429-1 Just Say It's Me-c/JW/WW/2p/bj/ob/d Victor V-38132
 55430-1 Now Goofy Dust Rag - full band Victor V-38091

BENNIE MOTEN'S KANSAS CITY ORCHESTRA: Eddie Durham-tb-g-a added; Count Basie-p replaces Bennie Moten, who now directs without playing.

Chicago, October 23, 1929.
 57301-1 Rumba Negro (Spanish Stomp) Victor 23037
 57302-2 The Jones Law Blues Victor 23357
 57303-1 Band Box Shuffle Victor 23007
 57304-1 Small Black Victor 23342
 57305-2 Every Day Blues (Yo Yo Blues) Victor V-38144

BENNIE MOTEN'S KANSAS CITY ORCHESTRA: Willie Mc Washington-v.

Chicago, October 24, 1929.
 57312-3 Boot It Victor V-38144
 57313-3 Mary Lee Victor V-38114
 57314-2 Rit-Dit-Ray - vWM Victor 23342
 57315-2 New Vine Street Blues Victor 23007
 57316-2 Sweetheart Of Yesterday Victor V-38114

BENNIE MOTEN'S KANSAS CITY ORCHESTRA: Oran "Hot Lips" Page-t added; Jimmy Rushing-v.

Kansas City, October 27, 1930
 62909-2 Won't You Be My Baby? - vJR Victor 23028

BENNIE MOTEN'S KANSAS CITY ORCHESTRA: same.

Kansas city, October 28, 1930
 62910-2 I Wish I Could Be Blue Victor 22734
 62911-2 Oh! Eddie Victor 22958
 62912-2 That Too, Do - vJR Victor 22793
 62913-1 Mack's Rhythm Victor LPM-10023
 62914-1 You Made Me Happy Victor Rejected
 62915-1 Here Comes Marjorie Victor 23391



BENNIE

TUNE IN ON WLW
EVERY SAT. & SUN.
10 P.M. TO 11:30 P. M.

**VICTOR
RECORDING
ORCHESTRA**
AMERICA'S GREATEST
SHOWBAND

**M
O
T
E
N**



Friday
SEPT. 30

GOLDEN SLIPPER

NITE CLUB

DAYTON

BENNIE MOTEN'S
KANSAS CITY ORCHESTRA
1929-1930



CLASSICS 578

COMPACT
disc
DIGITAL AUDIO

CLASSICS

© 1991 - CLASSICS RECORDS



PS

SAUF AUTORISATION LA DUPLICATION LA LOCATION LE PRET L UTILISATION DE CE DISQUE POUR EXECUTION ET RADIODIFFUSION SONT INTERDITS TOUTE VIOLATION PASSIBLE D UN POURSUITE EN JUSTICE
TOUTS DROITS DU PRODUCTEUR PHONOGRAPHIQUE ET DU PROPRIETAIRE DEL TEXTE ENREGISTRE RESERVES

001 054 212224LD

MADE IN FRANCE